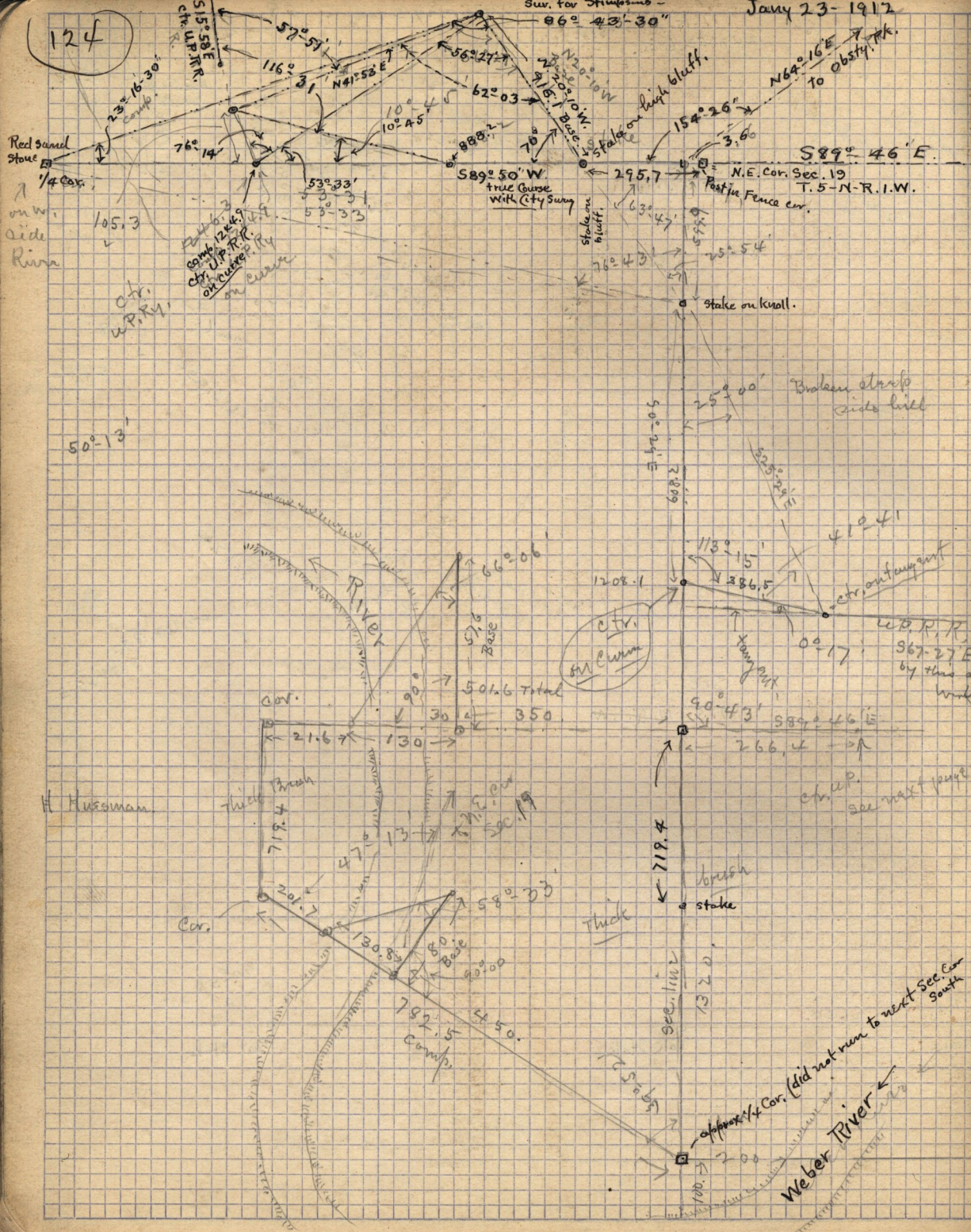


July 23 - 1912

Sw. cor. of Huggins

124



Red sand stone
1/4 cor.
on w. side
River

ctr. U.P.R.

Camp 124
ctr. U.P.R.
of curve in
on curve

50°-13'

RIVER

ctr. corner
Sw. corner

Hugginsman

Thick
brush

Thick
brush

ctr. U.P.R.
see next page

Cor.

sec. line

approx 1/4 Cor. (did not run to next Sec. Cor. South)
Weber River

Camp
792.15

719.4

100